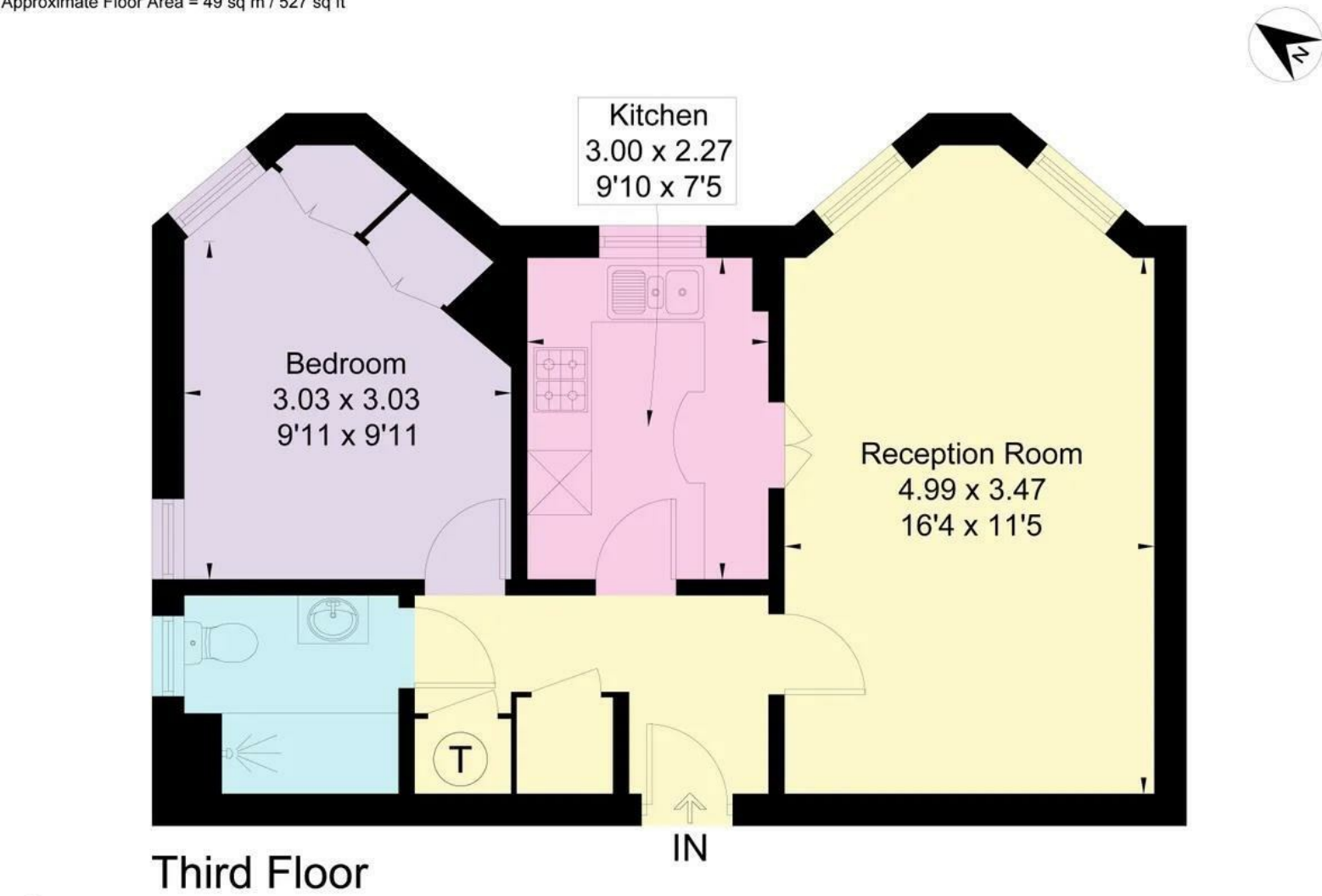



Approximate Floor Area = 49 sq m / 527 sq ft



 This floor plan has been drawn in accordance with RICS Property Measurement 2nd edition.
All measurements, including the floor area, are approximate and for illustrative purposes only. @fourwalls-group.com #66626



Finchley Road, London, NW11 7SB

Nestled in the desirable area of Golders Green, NW11, this one-bedroom retirement flat offers a perfect blend of comfort and convenience. Located just a short walk to Golders Hill Park and Hampstead Heath.

Upon entering, you will find a welcoming reception room that provides a relaxing space to unwind or entertain guests. The flat features a well-appointed bedroom, ensuring a peaceful retreat at the end of the day. The shower room is thoughtfully designed and includes heated towel rail.

One of the standout features of this property is the inviting communal lounge, where residents can socialise and enjoy a sense of community. The beautifully landscaped front and rear gardens offer a serene outdoor space, perfect for enjoy some morning sunshine and there is also plenty of parking.

Accessibility is a key consideration in this flat, with lift access available, making it suitable for all residents. This property not only provides a comfortable living environment but also fosters a sense of belonging within a supportive community.

In summary, this one-bedroom purpose-built flat on Finchley Road is an excellent opportunity for those looking for a peaceful and accommodating living space in a vibrant area. With its thoughtful design and communal amenities, it promises a delightful living experience.

Leasehold

£270,000

